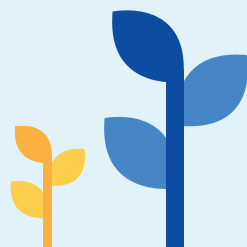


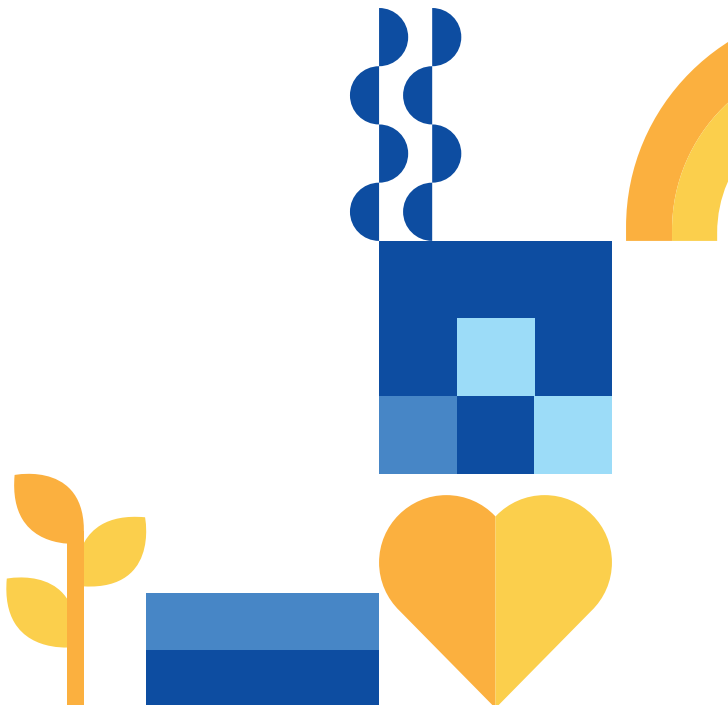
Our School Curriculum



Welcome to Boothville Primary School

At Boothville Primary School, our aim is to ensure we offer a curriculum that is broad, inclusive, engaging and allows pupils to enjoy their learning.

We want to give all our pupils the platform and confidence to reach their full potential in all areas of their learning.





**"...broad, inclusive
and engaging..."**

OUR CORE VALUES

Our curriculum is underpinned by our core values of:

RESPECT

We aim to do what is good and always be respectful. We care for others across cultures and generations. We respect our environment, ourselves and our health and well-being.

RESPONSIBILITY

We are responsible for the things that we say, think and do. We take care of ourselves, each other and our environment. We will always do our best.

HAPPINESS

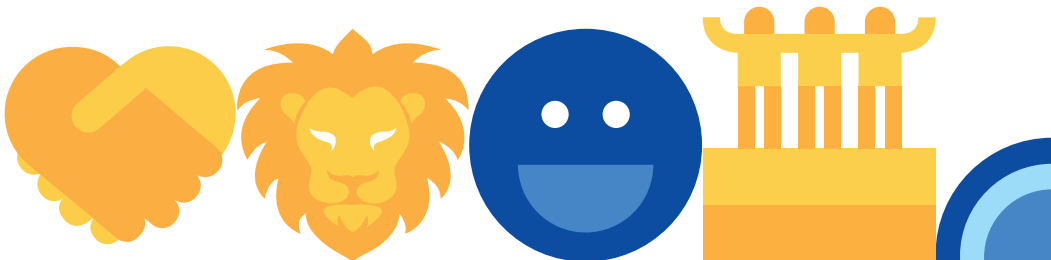
We want everyone in our school to be happy. We believe that we all achieve our best when we are happy.

HONESTY

We always tell the truth and can be trusted to be honest. We say what we mean and mean what we say.

COURAGE

We do the right thing, even when it's hard; we stand up for each other and are brave in facing our fears and finding ways to overcome them.



CURRICULUM INTENT

The child is at the heart of everything we do at Boothville Primary School. Our curriculum is built on key pedagogical principles and every child is encouraged to meet and achieve their potential. We make it our aim to discover what children enjoy and use this to promote a positive attitude to learning. The diversity of our school population is reflected in our curriculum. Pupils have opportunities to celebrate, share and learn about their different cultural and spiritual beliefs.

We are committed to providing a curriculum with breadth that allows and encourages all of our pupils to succeed in the following areas:

ACHIEVE

Achieve their personal best and reach their targets.

DEVELOP

Develop a range of learning skills (e.g. resilience, independence).

CONNECT

Make connections between prior knowledge, new information and experiences.

APPLY

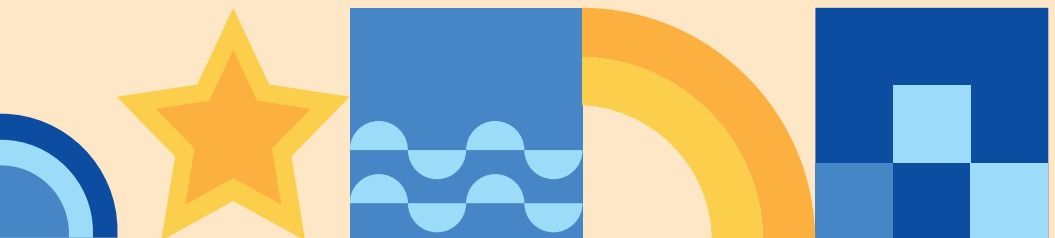
Apply skills and knowledge embedded within meaningful and purposeful contexts.

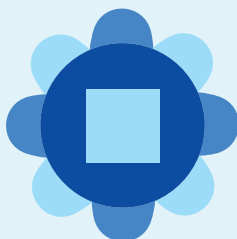
BE ACTIVE

Be an active member of the school community and understand the importance of British Values.

BE INVOLVED

Participate in a wide range of quality extra-curricular and enrichment opportunities





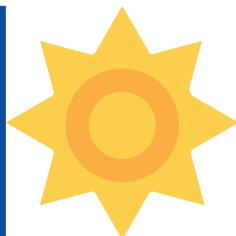
**Our school environment
lives above and beyond
the classroom**

KEY PRINCIPLES

Our curriculum is built around the following five areas:

1. ENVIRONMENT

Our holistic and restorative approach to well-being ensures that we build meaningful and lasting relationships. Working together to safeguard each other enables everyone to thrive, feel supported and maintain our physical and mental health.



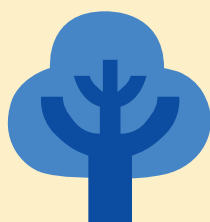
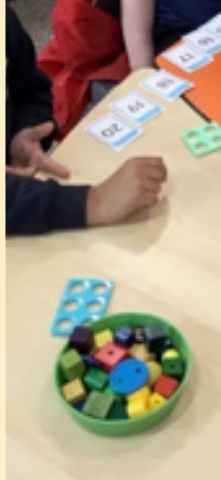
We encourage a growth mindset to build responsibility, foster honesty and boost courage.

2. WELL-BEING

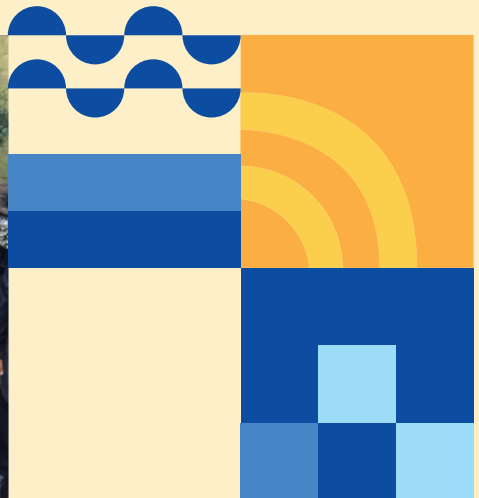
Our holistic and restorative approach to well-being ensures that we build meaningful and lasting relationships. Working together to safeguard each other enables everyone to thrive, feel supported and maintain our physical and mental health.



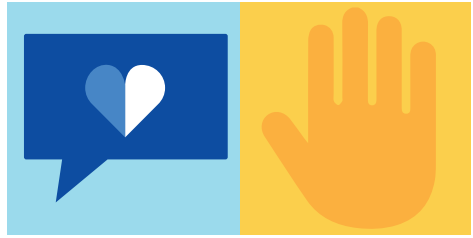
We encourage a growth mindset to build responsibility, foster honesty and boost courage.



**At Boothville
Primary, we
value respect,
honesty, courage,
responsibility
and happiness.**



3. COMMUNICATING

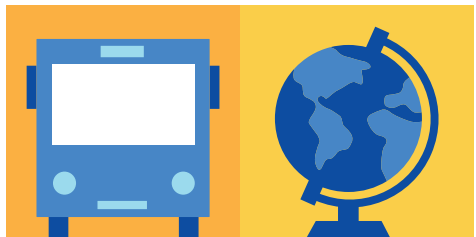


Communication is the key to school life and our inclusive and adaptable approaches allow us all to feel involved and connected.

By considering the clarity and content of our communication, we aim to provide understanding.

We always take the time to talk and actively listen to each other promoting collaboration, honesty and respect.

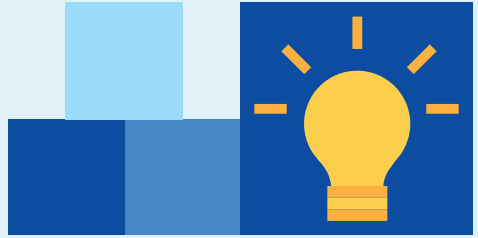
4. EXPERIENCES



We enrich school life with a variety of experiences to lead us beyond the curriculum. These shared experiences inspire and motivate, promote confidence and make us happy.

We want everyone to realise that they can achieve things that they did not think were possible. By doing this, we endeavour to bring together our community to shape positive and lasting memories, that we can all cherish.

5. LEARNING

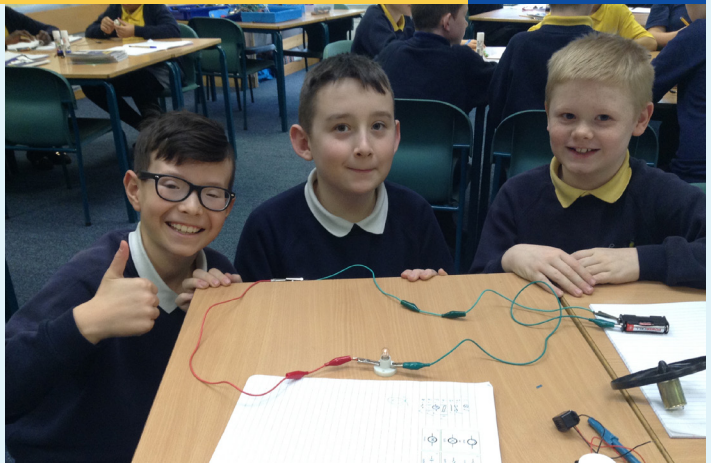


We aim to spark imaginations, encourage creativity and to promote aspirations. Through play, enquiry and experimentation, our teaching provides opportunities for everyone to develop independence, curiosity and resilience.

Engaging everyone in the learning process, and providing an understanding of how we learn, ensures that our children can recognise their successes and are motivated, and above all, ready for the next stage of their journey.



We enrich school life with a variety of experiences.



IMPLEMENTATION



The curriculum is based on good quality resources. In Maths, we use the White Rose material for our daily maths lessons and we assess using PUMA standardised materials alongside teacher assessment.

In writing we use Jane Considine's approach to learning – The Write Way. We look at a range of skills each week (composition of writing, grammar and comprehension) and this enables the children to build competency.

We use Jane Considine's progression and assessment grids. Kinetic Letters is used from EYFS so that children have a consistent approach to handwriting and presentation.

We use a range of techniques for Guided Reading based on language, reasoning and comprehension. In EYFS and KS1, we have a progressive and varied reading scheme that covers all genres and allows learners to choose books for enjoyment linked to their development stage. In KS2, children use the Accelerated Reader system.

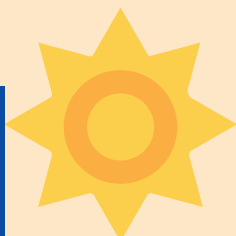
Foundation subjects are planned using progressive skills and knowledge. Learning is checked against these to ensure progression and understanding. Our teachers plan a wide variety of off-site educational visits, including residential. Visitors are also invited into school as a way of enhancing subject knowledge and providing the learners with real-life experiences.

'The curriculum is based on good quality resources.'





**'...a secure understanding
of the academic content...'**



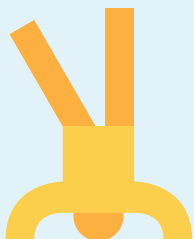
IMPACT



The impact of the curriculum is monitored through triangulation of outcomes; pupil voice, test/data outcomes, planning, monitoring of books and displays, lesson visits and learning walks.

Pupils leave Boothville Primary School with a secure understanding of the academic content; with the understanding of how to be socially, morally, spiritually and culturally responsible and aware; how to make positive contributions to the local community and how to endeavour to be the best that they can be.





Get in touch to find out more:

Booth Lane North
Northampton
Northants
NN3 6JG

01604 491545

